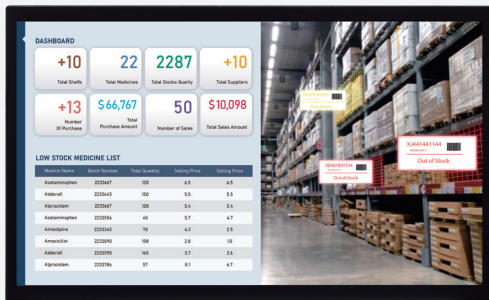


# XPPC 24-200A

23.8" TFT FHD 16:9 Slim Bezel, Multi-touch screen  
Powered by 11th Generation Intel® Core™ Processor



## Main Features

- 23.8" TFT FHD 16:9 panel
- PCAP 10-point multi-touch with slim bezel design
- IP65-rated front panel
- Support: VESA/panel/open frame mount
- 11th Gen Intel® Core™ processor (Tiger Lake UP3)
- 1 x 260-pin DDR4 SO-DIMM up to 32G
- On-board M.2 2280 Key M PCIe x4 for storage module
- Support power input 12 VDC

## Product Overview

The 23.8" fanless touchscreen computer XPPC 24-200A, powered by 11th Gen Intel® Core™ i7/i5/i3 processors (Tiger Lake UP3), delivers exceptional graphics performance. With its integrated Intel® Iris Xe graphics, the XPPC 24-200A enables excellent AI inferencing performance. Compatibility with the Hailo-8 M.2 AI Acceleration Module makes it a suitable solution for AI-powered applications. Moreover, the XPPC 24-200A is equipped with a 10-point PCAP touchscreen, front IP65 protection, FHD wide viewing angle G series panel. Its slim profile and flexible mounting options make it well-suited for a variety of industrial applications, including Service Robots, Smart Warehouse, Smart City, and Smart Pharmacy.

## Specifications

### Panel

- LCD size: Innolux G-series 23.8", 16:9
- Resolution: Full HD 1920 x 1080
- Luminance
  - LCD panel: 350cd/m2
  - XPPC PCAP touch: 85% of panel's luminance after air bonding
- Contrast ratio: 1000:1
- LCD color: 16.7M
- Viewing angle: 89 (U), 89 (D), 89 (L), 89 (R)

### Touch Screen

- 10-Point PCAP (Projected Capacitive Touch)
- Air bonding
- Glass surface treatment: AS + AG

### System

- On-board 11th Generation Intel® Core™ i3-1115G4E processor, Dual Core, 2.2 GHz base frequency, 6M Cache (formerly tiger lake-UP3)
  - Intel® UHD graphics 630 on i3 processor
- On-board 11th Generation Intel® Core™ i5-1145G7E processor, Dual Core, 1.5 GHz base frequency, 8M cache
  - Intel® Iris® Xe graphics on i5 processor

### Main Memory

- 1 x 260-pin DDR4 SO-DIMM, supports non-ECC, un-buffered memory up to 32G

### Storage Device

- 1 x M.2 2280 Key M SSD (support PCIe x4)

### Expansion

- 1 x M.2 2230 Key E, support optional WiFi modules

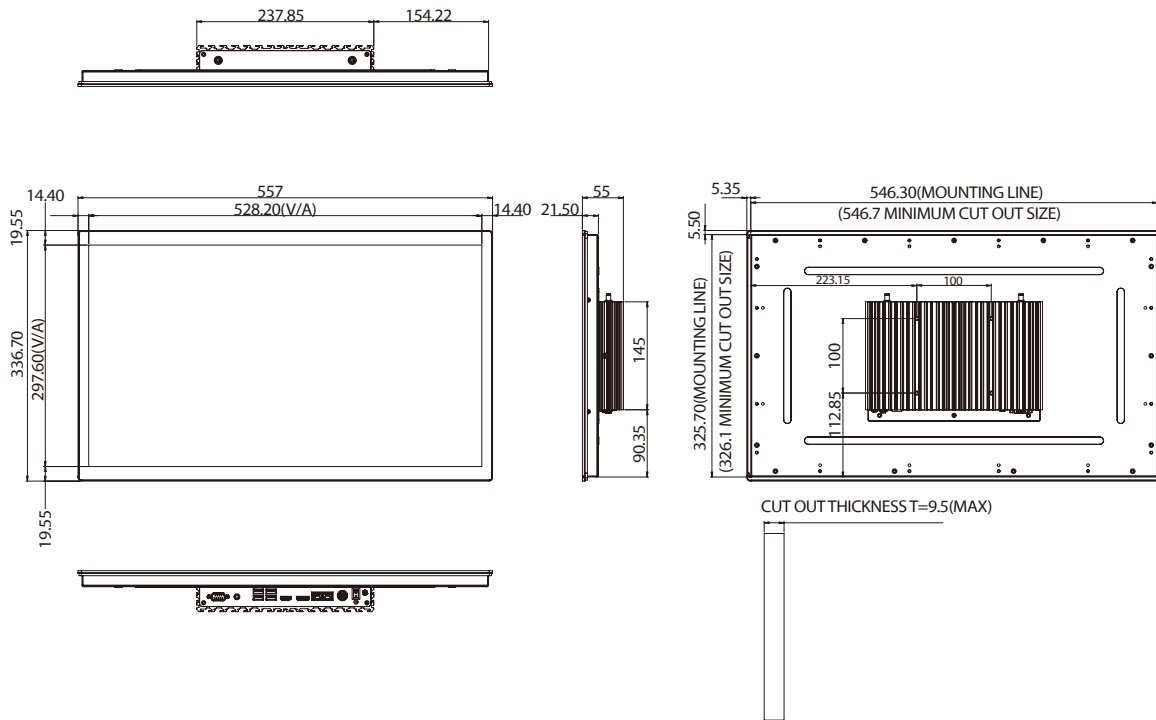
### Rear I/O

- 1 x 12V DC Jack
- 2 x RJ45 Intel® Gigabit LAN port
- 1 x DP++
- 1 x HDMI 2.0
- 4 x USB 3.0
- 1 x Line out
- 1 x RS232/422/485
- LED for Power on/off
- Power switch

### Front I/O

- 2 x Antenna hole

## Dimension Drawing



### Mechanical

- Color/material: black metal sheet
- Support
  - VESA mount 100mm x 100mm
  - Panel mount
  - Open frame

### Environment

- Vibration
  - IEC 68 2-64
  - 2G @ sine, 5~500Hz, 1hr/axis
  - 2.2Grms @ random condition, 5~500Hz, 0.5hr/axis (non-operating)
- Shock
  - IEC 68 2-27
  - 20g peak acceleration (11 msec. duration)
- Temperature
  - Operating temperature: with 0.35 m/s air flow: 0°C~50°C
  - Storage temperature: -20°C~60°C
- Operating humidity: 10%~90% relative humidity, non-condensing limits to be at 90%

### Dimensions

- System: 557mm x 336.7mm x 55mm
- System weight: 5.8 kg
- Package: 650mm x 480mm x 170mm
- Package weight: 7.85 kg

### Power Supply

- 1 x 96W AC/DC lockable adapter included in accessory
- Input: 100VAC to 240VAC
- Output: DC+12VDC

### Certifications

- CE (EN55035 + EN55032)
- FCC Class A (EMI part 15B)
- LVD (EN62368-1)

### OS Support Lists

- Windows 10 64-bit
- Linux

## Ordering Information

- **XPPC24-200A-i3 (P/N:10W30XPPC37X0)**  
23.8" FHD LED multi touchscreen computer, Intel® Core™ i3-1115G4E Processor, w/air bonding
- **XPPC24-200A-i5 (P/N: 10W30XPPC38X0)**  
23.8" FHD LED multi touchscreen computer, Intel® Core™ i5-1145G7E Processor, w/air bonding
- **Panel mount kit (P/N: 88W30XPPC00X0)**
- **Open frame kit (P/N: 88W30XPPC01X0)**